

# H-Series Hose Fitting



H-Series Hose Fittings are a heavy duty and well proven product. They will provide a long service life and are suited to the most rugged and demanding applications. For use with our complete line of Polyurethane tube, Spirals and Braided Hose.

A simple two-piece compression style design that is reusable and allows for fast, leak-free and slim installation.

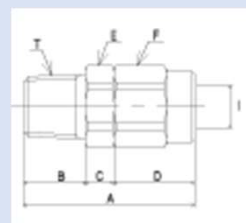
Media	Compressed Air or Water
Working Pressure	1 Mpa for compressed air, 0.3 Mpa for water
Working Temperature	-5 – 60 degree C
Body Material	Brass (Nickel Plated)

## Male Thread (Non-Swivel)



Unit(mm)

Model	For Hose	T Thread	A (mm)	B (mm)	F (mm)	I (mm)
H5-2M	5x8mm	R 1/4	33	13	14	4
H6.5-2M	6.5x10mm	R 1/4	35	13	16	5.7
H6.5-3M	6.5x10mm	R 3/8	35.5	13	16	5.7
H8-2M	8x12mm	R 1/4	40	13	19	7
H8-3M	8x12mm	R 3/8	40	13	19	7
H11-3M	11x16mm	R 3/8	45	13	24	9.5
H11-4M	11x16mm	R 1/2	47	15	24	9.5

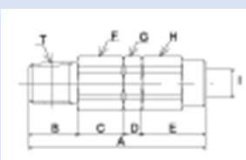


## Male Thread (Swivel)



Unit(mm)

Model	For Hose	Thread	A (mm)	B (mm)	F (mm)	I (mm)
H5-2MU	5x8mm	R 1/4	45	13	14	4
H6.5-2MU	6.5x10mm	R 1/4	47	13	16	5.7
H6.5-3MU	6.5x10mm	R 3/8	47	13	16	5.7
H8-2MU	8x12mm	R 1/4	50.5	13	19	7
H8-3MU	8x12mm	R 3/8	50.5	13	19	7
H11-3MU	11x16mm	R 3/8	58	13	24	9.5
H11-4MU	11x16mm	R 1/2	58	15	24	9.5

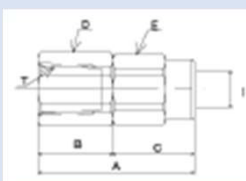


## Female Thread (Non Swivel)



Unit(mm)

Model	For Hose	Thread	A (mm)	B (mm)	E (mm)	I (mm)
H5-2F	5x8mm	Rc 1/4	30	15	14	4
H6.5-2F	6.5x10mm	Rc 1/4	31.5	15	16	5.7
H6.5-3F	6.5x10mm	Rc 3/8	31.5	15	16	5.7
H8-2F	8x12mm	Rc 1/4	37	17	19	7
H8-3F	8x12mm	Rc 3/8	36.5	16.5	19	7
H11-4F	11x16mm	Rc 1/2	44	20	24	9.5



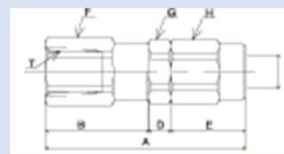
# H-Series Hose Fitting

## Female Thread (Swivel)



Unit(mm)

Model	For Hose	T Thread	A (mm)	B (mm)	H (mm)	I (mm)
H5-2FU	5x8mm	1/4 BSP	43.5	23.5	14	4
H6.5-2FU	6.5x10mm	1/4 BSP	45	23.5	16	5.7
H6.5-3FU	6.5x10mm	3/8 BSP	46	24.5	16	5.7
H8-2FU	8x12mm	1/4 BSP	48.5	23.5	19	7
H8-3FU	8x12mm	3/8 BSP	49.5	24.5	19	7
H11-3FU	11x16mm	3/8 BSP	56	26	24	9.5
H11-4FU	11x16mm	1/2 BSP	58.5	28.5	24	9.5

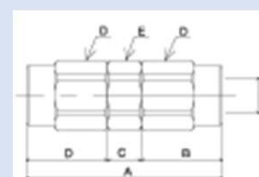


## Hose Joiner



Unit(mm)

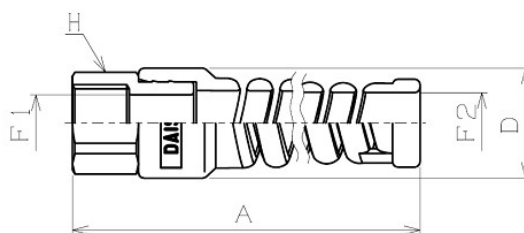
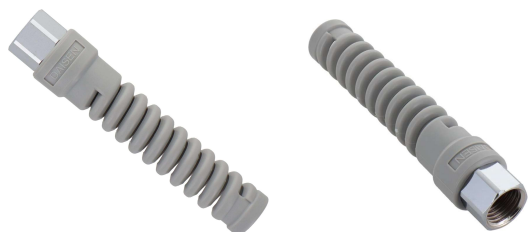
Model	For Hose	A (mm)	B (mm)	D (mm)	I (mm)
H5-00	5x8mm	37	15	14	4
H6.5-00	6.5x10mm	40	16.5	16	5.7
H8-00	8x12mm	47	20	19	7



## Hose Guide (Nut connection type Coupling and Hose fitting)



The contact surface of the hose nut connection base is prone to scratches and damage depending on usage frequency. Initially, metal spring guards were commonly employed, but they were susceptible to rust and deformation, resulting in poor reception due to compromised functionality and aesthetics. Daisen has innovated this design by utilizing resin molding to craft the spring shape, seamlessly integrating the nut component through a press-fit process. This complete redesign of the conventional model significantly enhances both durability and operational performance.



(mm)

Model	Material	Hose Size (ID XOD)	A	D	F1	F2	H	Weight(g)
50 HOSE GUIDE	Steel	5.0 × 8.0	98	20	8	11.1	16	27
65 HOSE GUIDE	Steel	6.5 × 10.0	102	20	10.3	11.1	16	26
70 HOSE GUIDE	Steel	7.0 × 10.5	102	20	10.8	11.1	16	24
80 HOSE GUIDE	Steel	8.0 × 12.0	105	22	12.3	13.3	19	32
85 HOSE GUIDE	Steel	8.5 × 12.5	105	22	12.8	13.3	19	32
50 HOSE GUIDE(AL)	Aluminum	5.0 × 8.0	100	20	8	11.1	17	18
65 HOSE GUIDE(AL)	Aluminum	6.5 × 10.0	102	20	10.3	11.1	16	17
85 HOSE GUIDE(AL)	Aluminum	8.5 × 12.5	105	22	12.3	13.3	19	20

# Polyurethane Braided Hose

Togawa made /Made in Japan



Designed as premium quality General Purpose air hose.  
This product is supplied in sizes consistent with common  
Asian hose sizes.(Specifications : Working temperature limit:  
Between -20°C and + 60°C)

## Features & Benefits

- Extremely long life hose
- Strong and durable
- Water and Oil resistant
- Abrasion resistant – tough
- Soft and Flexible – even in cold climates
- Will not easily embed dust & grit – less incidental damage
- Hose will not mark paint or surfaces
- Use PU, Use our coupling or H-Hose Fittings.

Unit(mm)

Model	Inner diameter(mm)	Outer diameter(mm)	Regular size(m)	Maximum working pressure MPa at 20°C	Minimum bending radius(mm)	Regular size weight(kg)	Color
TPH-6510	6.5	10	100	1.5	30	5.7	Orange / Red
TPH-8512	8.5	12.5	100	1.5	40	8.3	Orange / Red
TPH-1116	11	16	50	1.5	45	6.5	Orange